



US012082304B2

(12) **United States Patent**  
**Newman et al.**

(10) **Patent No.:** **US 12,082,304 B2**  
(45) **Date of Patent:** **Sep. 3, 2024**

(54) **VEHICLE LOCALIZATION AND IDENTIFICATION BY MAP MERGING IN 5G AND 6G**

H04W 4/46; H04W 4/90; H04W 88/06;  
G01S 5/0063; G01S 19/256; G01S  
5/0072; G06K 19/06037; G06K  
19/06112; G06K 7/1095; G08G 1/0145;  
G08G 1/017; G08G 1/04; G08G 1/056;  
G08G 1/091; G08G 1/137; G08G 1/161;  
G08G 1/162; G08G 1/166; G08G 1/167;  
G08G 1/0141;

(71) Applicants: **David E. Newman**, Poway, CA (US);  
**R. Kemp Massengill**, Palos Verdes, CA (US)

(72) Inventors: **David E. Newman**, Poway, CA (US);  
**R. Kemp Massengill**, Palos Verdes, CA (US)

(Continued)

(\* ) Notice: Subject to any disclaimer, the term of this patent is extended or adjusted under 35 U.S.C. 154(b) by 143 days.

(56) **References Cited**

U.S. PATENT DOCUMENTS

8,520,695 B1 8/2013 Rubin  
10,554,521 B1 \* 2/2020 Terechko ..... H04L 43/0835  
(Continued)

(21) Appl. No.: **18/084,848**

*Primary Examiner* — Michael V Kerrigan

(22) Filed: **Dec. 20, 2022**

(65) **Prior Publication Data**

US 2023/0122574 A1 Apr. 20, 2023

**Related U.S. Application Data**

(63) Continuation of application No. 17/895,181, filed on Aug. 25, 2022, now Pat. No. 11,546,753, which is a (Continued)

(57) **ABSTRACT**

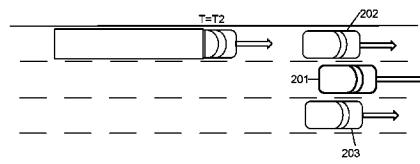
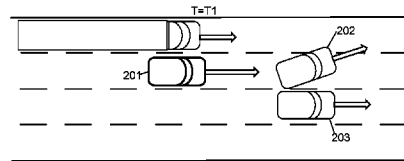
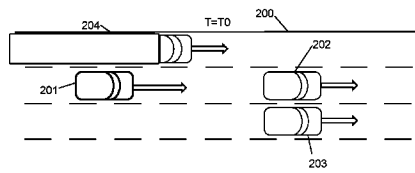
Autonomous vehicles, and user-driven vehicles with an emergency intervention capability, can communicate to avoid collisions using 5G/6G technology, but this level of cooperation is possible only if the threatened vehicles have already determined the relative location and wireless address of the other vehicle. Disclosed is a method for wireless vehicles in traffic to exchange distance and angular information of the other vehicles in view, from which a position map can be prepared indicating the relative locations of each participating and non-participating vehicle. In addition, the traffic map can be annotated with the wireless addresses of the participating vehicles, thereby enabling them to communicate instantly in an emergency. The traffic map may be prepared or updated by one of the vehicles in traffic, or by a roadside access point. Satellite data is not necessary for the relative localization, but may be included if available.

(51) **Int. Cl.**  
**H04W 8/26** (2009.01)  
**G01S 5/00** (2006.01)  
(Continued)

(52) **U.S. Cl.**  
CPC ..... **H04W 8/26** (2013.01); **G01S 5/0063** (2013.01); **G01S 19/256** (2013.01);  
(Continued)

(58) **Field of Classification Search**  
CPC ..... H04W 8/26; H04W 4/029; H04W 4/40;

**20 Claims, 10 Drawing Sheets**



**Related U.S. Application Data**

continuation of application No. 17/582,243, filed on Jan. 24, 2022, now Pat. No. 11,451,955.

- (60) Provisional application No. 63/290,731, filed on Dec. 17, 2021, provisional application No. 63/288,807, filed on Dec. 13, 2021, provisional application No. 63/288,237, filed on Dec. 10, 2021, provisional application No. 63/287,428, filed on Dec. 8, 2021, provisional application No. 63/272,352, filed on Oct. 27, 2021, provisional application No. 63/271,335, filed on Oct. 25, 2021, provisional application No. 63/256,042, filed on Oct. 15, 2021, provisional application No. 63/246,000, filed on Sep. 20, 2021, provisional application No. 63/245,227, filed on Sep. 17, 2021, provisional application No. 63/243,437, filed on Sep. 13, 2021, provisional application No. 63/260,814, filed on Sep. 1, 2021.

**(51) Int. Cl.**

**G01S 19/25** (2010.01)  
**G06K 19/06** (2006.01)  
**G08G 1/01** (2006.01)  
**G08G 1/017** (2006.01)  
**G08G 1/04** (2006.01)  
**G08G 1/056** (2006.01)  
**G08G 1/09** (2006.01)  
**G08G 1/137** (2006.01)  
**G08G 1/16** (2006.01)  
**H04W 4/029** (2018.01)  
**H04W 4/40** (2018.01)  
**H04W 4/46** (2018.01)  
**H04W 4/90** (2018.01)

**(52) U.S. Cl.**

CPC ..... **G06K 19/06037** (2013.01); **G08G 1/0145** (2013.01); **G08G 1/017** (2013.01); **G08G 1/04** (2013.01); **G08G 1/056** (2013.01); **G08G 1/091** (2013.01); **G08G 1/137** (2013.01); **G08G 1/161** (2013.01); **G08G 1/162**

(2013.01); **G08G 1/166** (2013.01); **G08G 1/167** (2013.01); **H04W 4/029** (2018.02); **H04W 4/40** (2018.02); **H04W 4/46** (2018.02); **H04W 4/90** (2018.02)

**(58) Field of Classification Search**

CPC .... G08G 1/092; G08G 1/094; G08G 1/09623; G08G 1/0965

See application file for complete search history.

**(56)****References Cited**

## U.S. PATENT DOCUMENTS

2007/0262574	A1	11/2007	Breed
2008/0059050	A1	3/2008	Lin
2010/0177681	A1	7/2010	Sahinoglu
2010/0256852	A1	10/2010	Mudalige
2013/0203400	A1	8/2013	Ricci
2016/0077213	A1	3/2016	Xianglin
2017/0018187	A1	1/2017	Kim
2017/0146660	A1	5/2017	Xu
2017/0176599	A1	6/2017	Hay
2017/0212510	A1	7/2017	Nordbruch
2017/0285176	A1	10/2017	Croyle
2018/0113472	A1	4/2018	Sakr
2018/0160419	A1	6/2018	Jiang
2018/0208140	A1	7/2018	Sugimoto
2018/0328734	A1	11/2018	Kasslatter
2019/0069051	A1	2/2019	Al-Stouhi
2019/0094385	A1	3/2019	Laurichesse
2019/0239040	A1	8/2019	Va
2020/0041604	A1	2/2020	Kim
2020/0178039	A1	6/2020	Lee
2020/0336541	A1	10/2020	Alizadeh
2021/0018630	A1	1/2021	Mueller
2021/0096215	A1	4/2021	Slobodyanyuk
2021/0132233	A1	5/2021	Govindillam
2021/0150895	A1	5/2021	Huang
2021/0286044	A1	9/2021	Knuutila
2021/0306682	A1	9/2021	Ucar
2021/0318450	A1	10/2021	Tomita
2021/0377760	A1	12/2021	Guo

\* cited by examiner

**FIG. 1** (prior art)

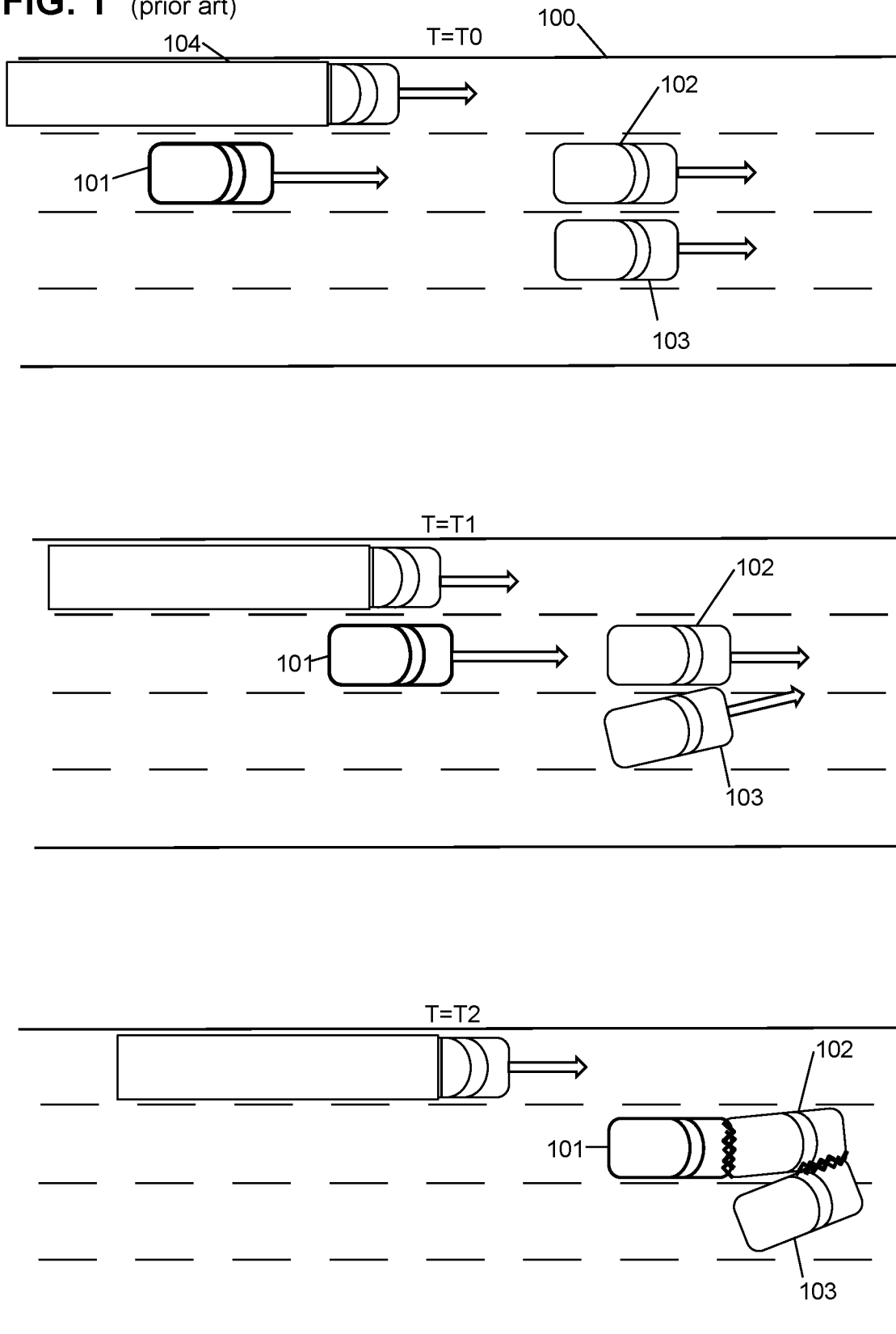


FIG. 2

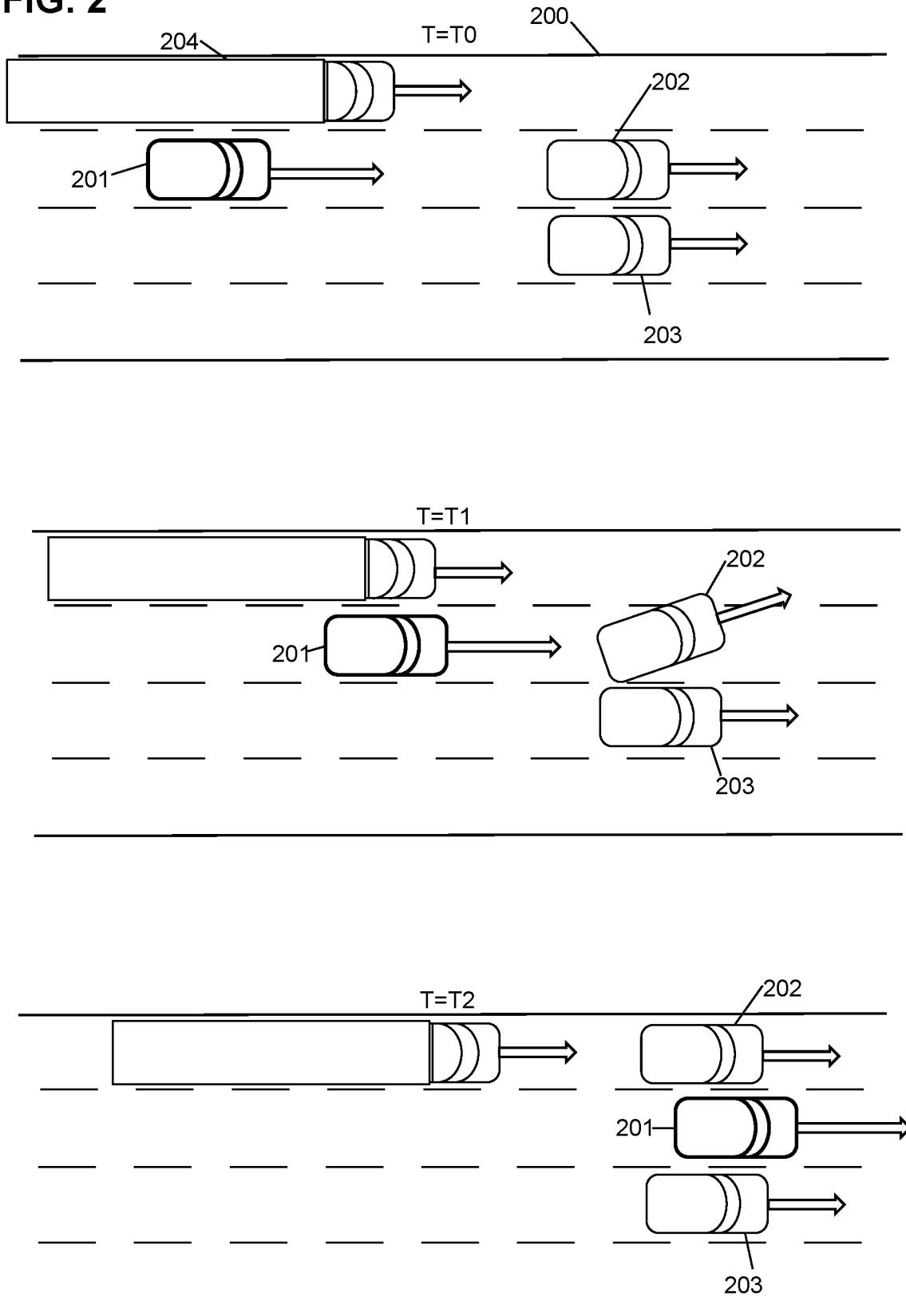


FIG. 3 (prior art)

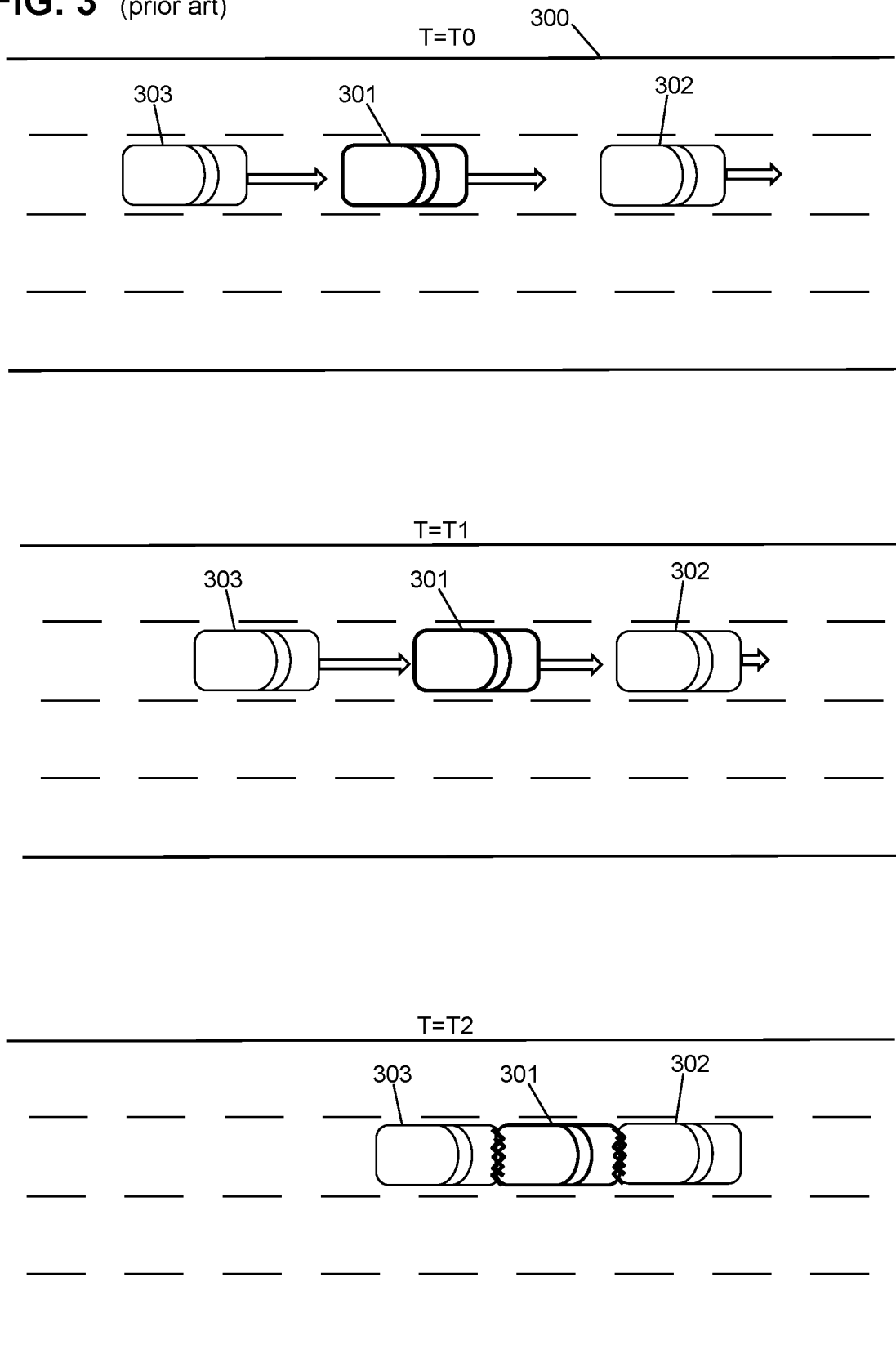


FIG. 4

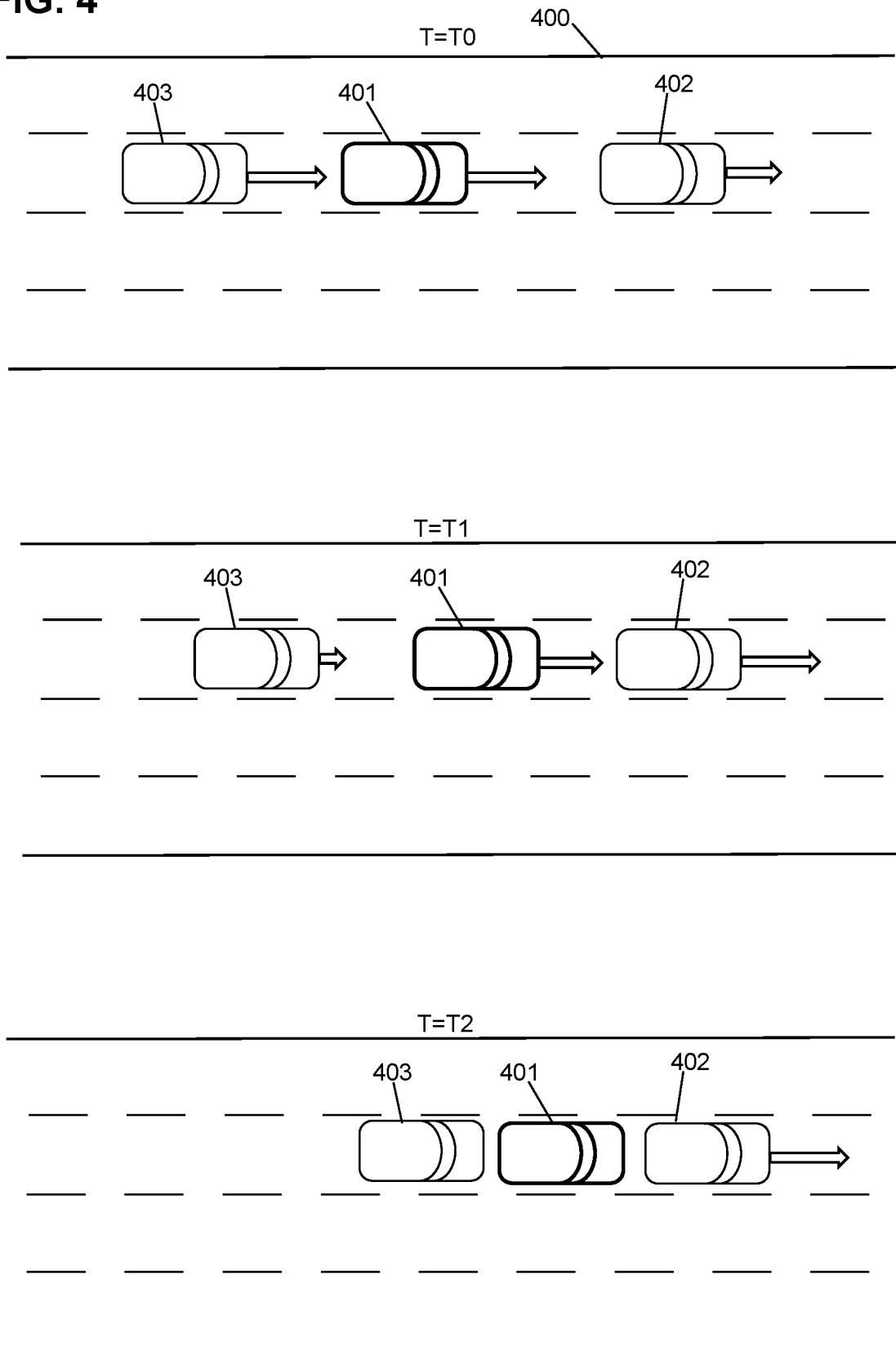


FIG. 5

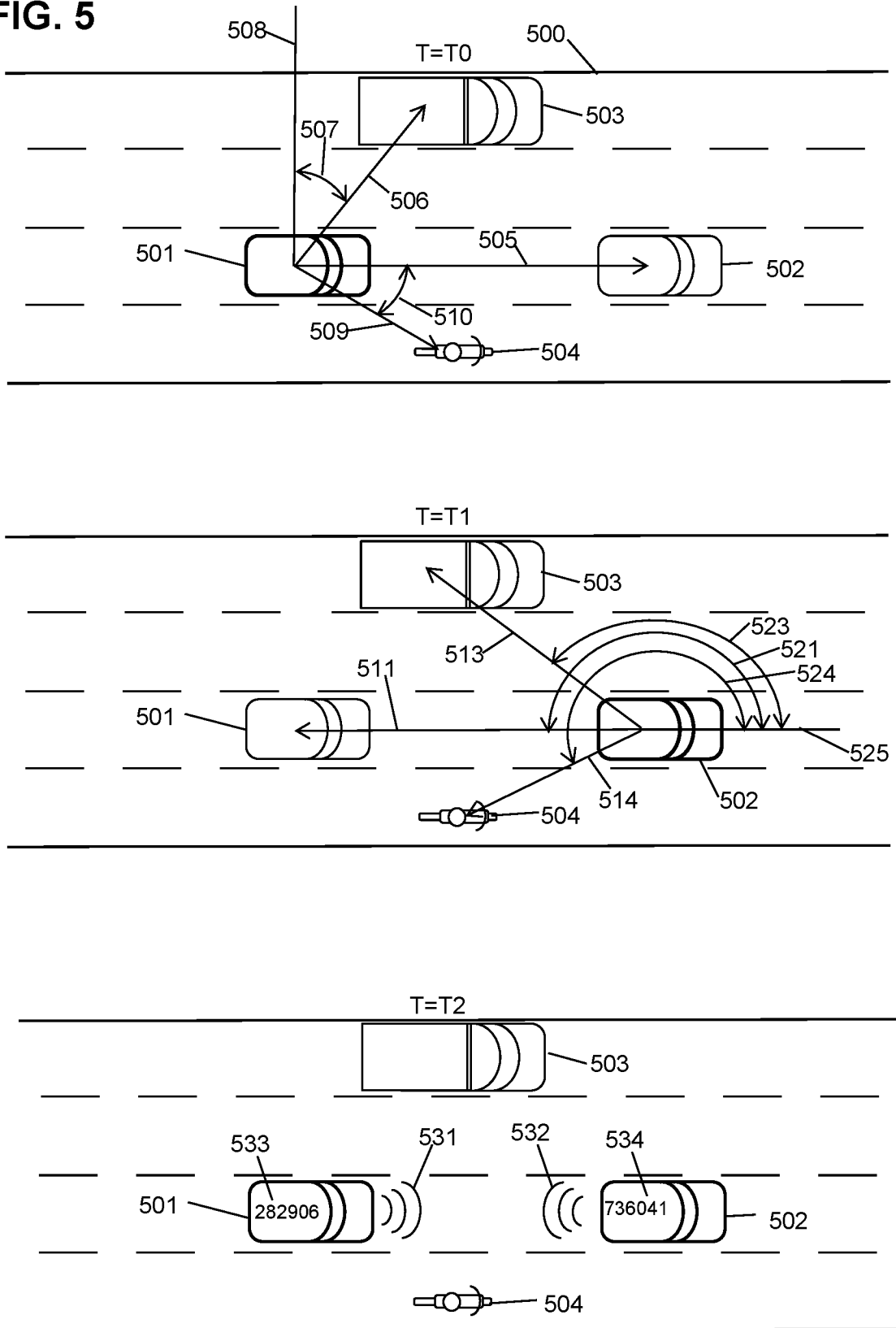


FIG. 6

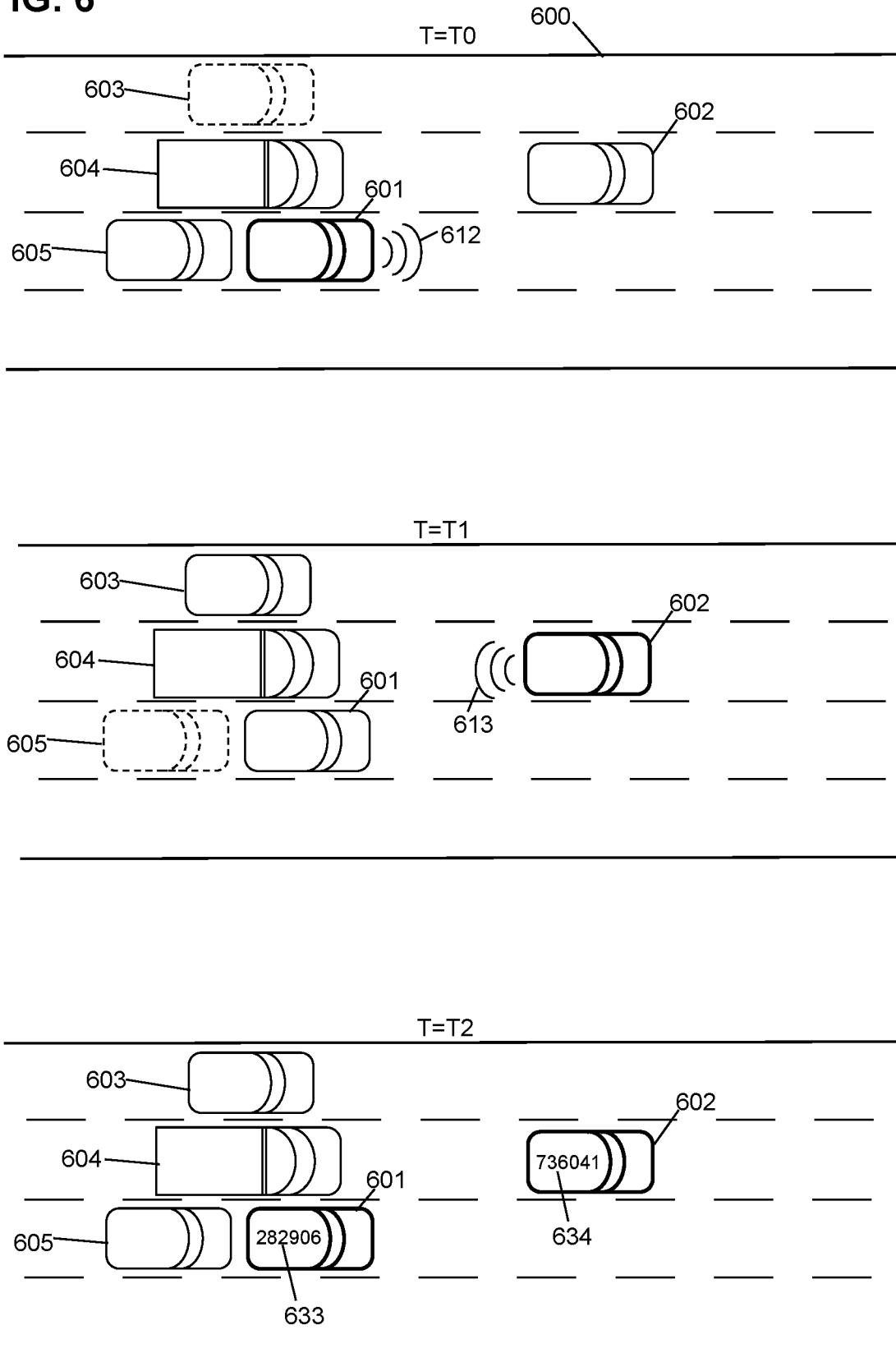




FIG. 7A

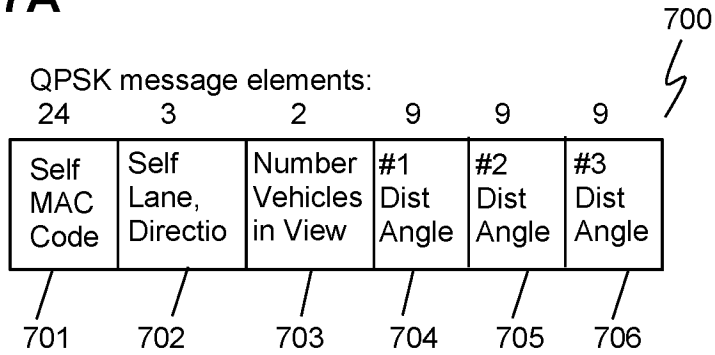


FIG. 7B

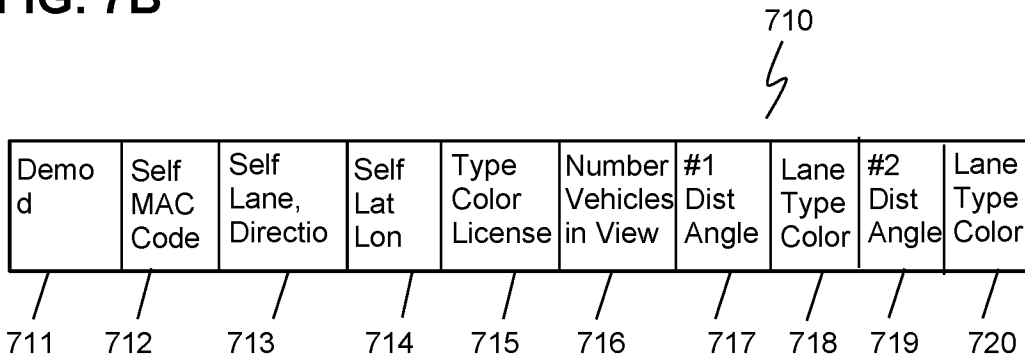


FIG. 7C

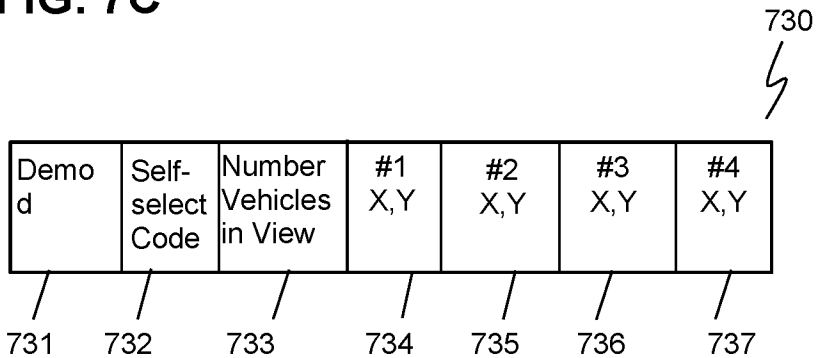


FIG. 8

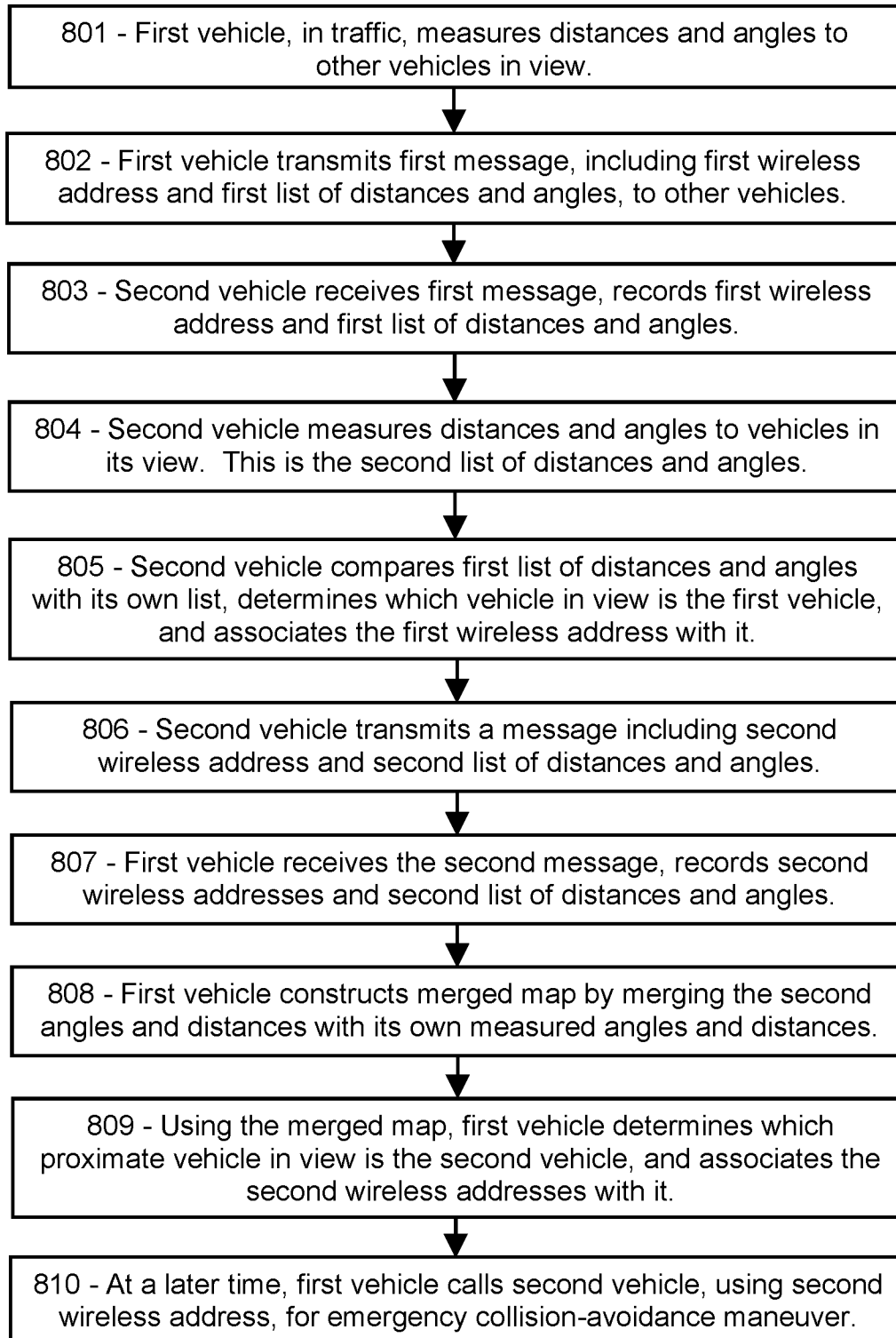


FIG. 9A

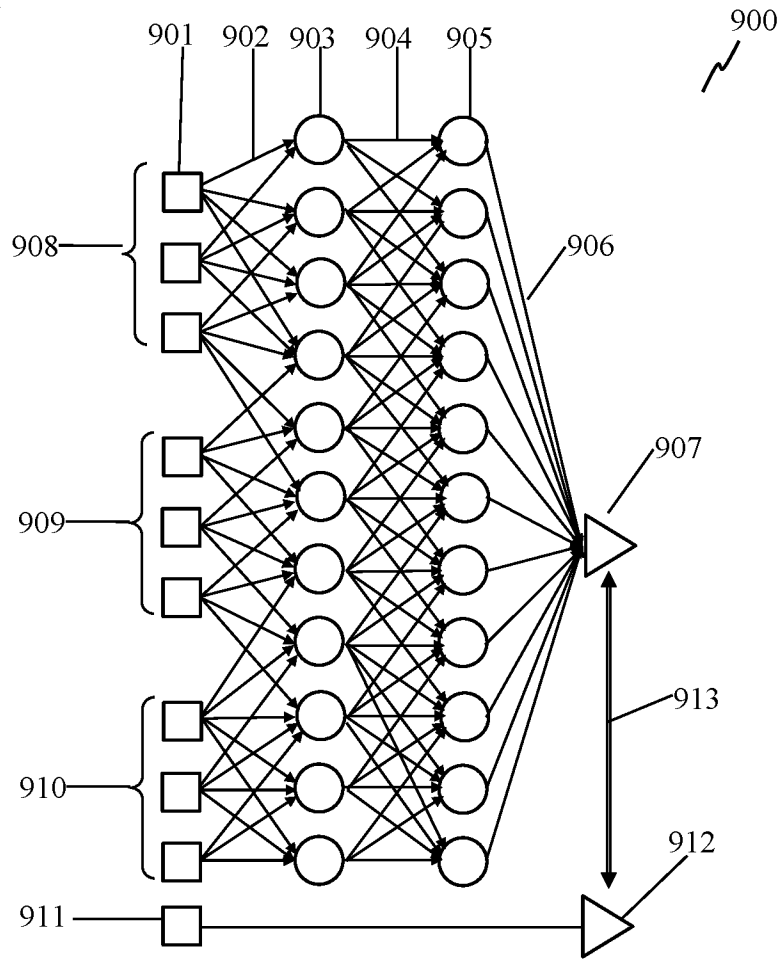


FIG. 9B

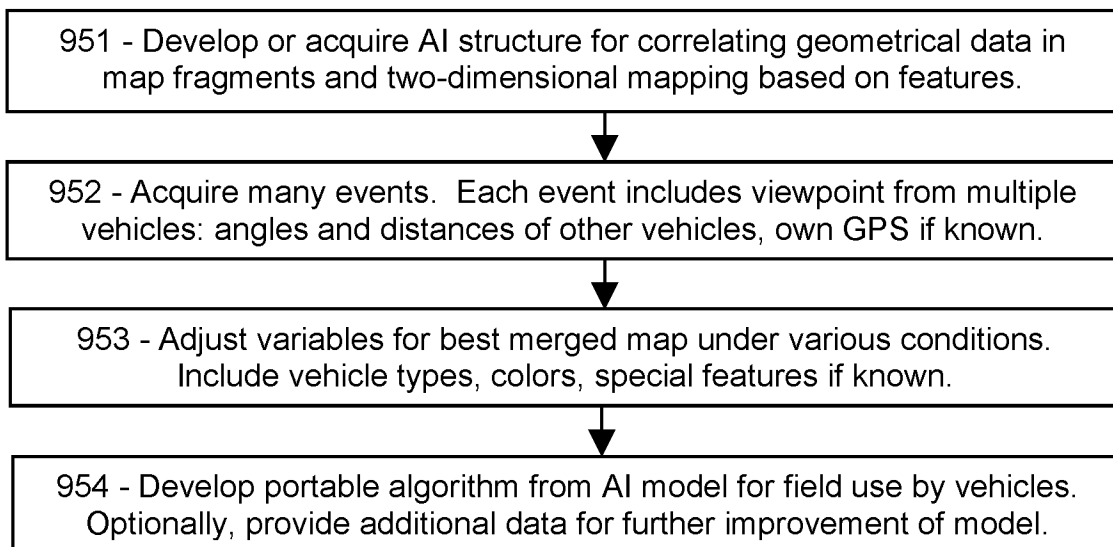


FIG. 10A

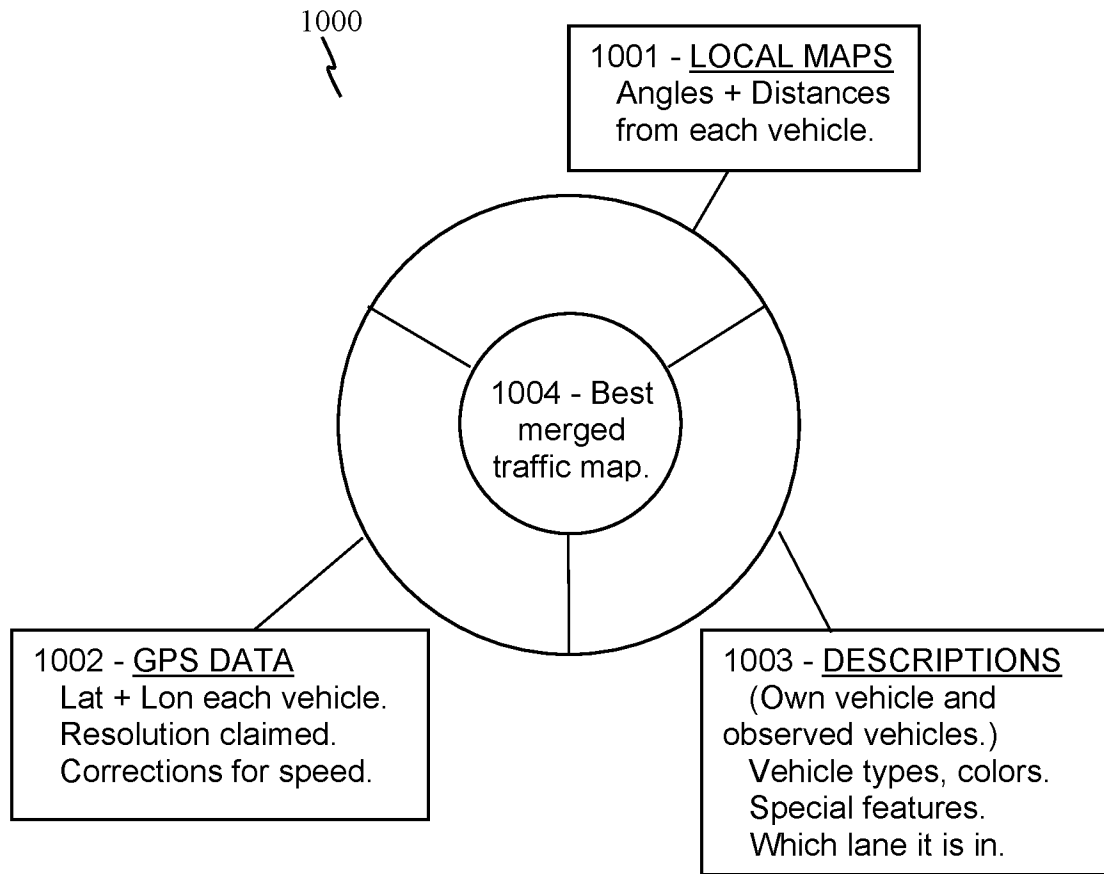
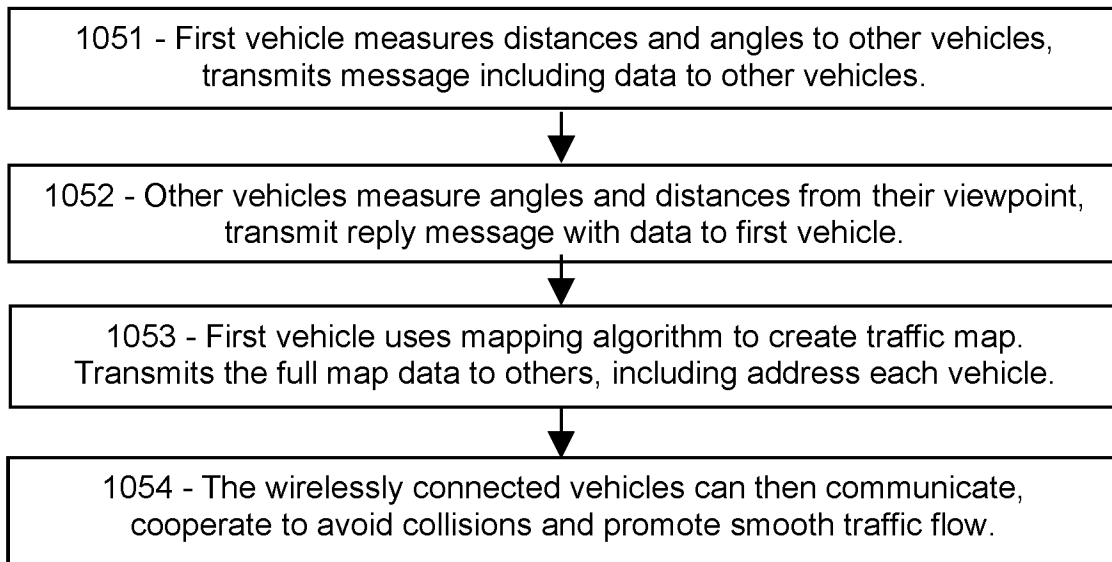


FIG. 10B



1

**VEHICLE LOCALIZATION AND  
IDENTIFICATION BY MAP MERGING IN 5G  
AND 6G**

PRIORITY CLAIMS AND RELATED  
APPLICATIONS

This application is a continuation of U.S. patent application Ser. No. 17/895,181, entitled “Simultaneous Traffic Mapping for AI-Assisted V2V and V2X in 5G/6G”, filed Aug. 25, 2022, which is a continuation of U.S. patent application Ser. No. 17/582,243, entitled “V2X and Vehicle Localization by Local Map Exchange in 5G/6G”, filed Jan. 24, 2022, which claims the benefit of U.S. Provisional Patent Application Ser. No. 63/260,814, entitled “Localization and Identification of Vehicles in Traffic by 5G Messaging”, filed Sep. 1, 2021, and US Provisional Patent Application Ser. No. 63/243,437, entitled “V2X Messaging in 5G with Simultaneous GPS Reception”, filed Sep. 13, 2021, and U.S. Provisional Patent Application Ser. No. 63/245,227, entitled “V2X with 5G Image Exchange and AI-Based Viewpoint Fusion”, filed Sep. 17, 2021, and U.S. Provisional Patent Application Ser. No. 63/246,000, entitled “V2X Connectivity Matrix with 5G Sidelink”, filed Sep. 20, 2021, and U.S. Provisional Patent Application Ser. No. 63/256,042, entitled “Hailing Procedure for V2R, V2V and V2X Initial Contact in 5G”, filed Oct. 15, 2021, and U.S. Provisional Patent Application Ser. No. 63/271,335, entitled “Semaphore Messages for Rapid 5G and 6G Network Selection”, filed Oct. 25, 2021, and U.S. Provisional Patent Application Ser. No. 63/272,352, entitled “Sidelink V2V, V2X, and Low-Complexity IoT Communications in 5G and 6G”, filed Oct. 27, 2021, and US Provisional Patent Application Ser. No. 63/287,428, entitled “V2X and Vehicle Localization by Local Map Exchange in 5G/6G”, filed Dec. 8, 2021, and U.S. Provisional Patent Application Ser. No. 63/288,237, entitled “V2X with 5G/6G Image Exchange and AI-Based Viewpoint Fusion”, filed Dec. 10, 2021, and US Provisional Patent Application Ser. No. 63/288,807, entitled “V2X Messaging in 5G/6G with Simultaneous GPS Reception”, filed Dec. 13, 2021, and U.S. Provisional Patent Application Ser. No. 63/290,731, entitled “Vehicle Connectivity, V2X Communication, and 5G/6G Sidelink Messaging”, filed Dec. 17, 2021, all of which are hereby incorporated by reference in their entireties.

FIELD OF THE INVENTION

The invention relates to systems and methods for short-range locating and identification of vehicles in traffic.

BACKGROUND OF THE INVENTION

Autonomously operated vehicles are expected to cooperate with other vehicles, in order to avoid collisions and generally facilitate the flow of traffic. However, intervehicle cooperation is possible only if each vehicle can determine the wireless address of each other vehicle in proximity. Without knowing which vehicle has which wireless address, they cannot send a message to another specific vehicle, nor determine which vehicle has sent a message.

What is needed is means for determining the wireless address of each proximate vehicle in traffic, so that they can communicate for traffic management and collision avoidance.

This Background is provided to introduce a brief context for the Summary and Detailed Description that follow. This

2

Background is not intended to be an aid in determining the scope of the claimed subject matter nor be viewed as limiting the claimed subject matter to implementations that solve any or all of the disadvantages or problems presented above.

SUMMARY OF THE INVENTION

In a first aspect, there is a method for a first wireless device to determine locations of vehicles in traffic, the method comprising: attempting and failing to determine a location of the first wireless device using a global navigation satellite system (GNSS); then broadcasting a request message comprising a wireless address of the first wireless device, a time delay, and a request for each wireless entity within radio range to: wait the time delay; then measure an angle and a distance of each vehicle in view of the wireless entity; and then transmit a reply message to the first wireless device, the reply message listing the angles and the distances, and further including a wireless address of the wireless entity; and determining, according to the angles and distances, a location of at least one vehicle relative to the first wireless device.

In another aspect, there is non-transitory computer-readable media in a wireless entity, the media containing instructions that when implemented in a computing environment cause a method to be performed, the method comprising: receiving a request message from a first vehicle, the request message requesting the wireless entity to: determine, at a particular time, an angle measurement and a distance measurement of each vehicle in view of the wireless entity; and transmit a reply message, comprising the angle and distance measurements, to a particular wireless address of the first vehicle; at the particular time, measuring an angle and a distance of each vehicle in view of the wireless entity; transmitting a reply message to the first vehicle, the reply message comprising the angles and distances measured by the wireless entity; and receiving, from the first vehicle, a traffic map message comprising two-dimensional coordinates of vehicles in traffic.

In another aspect, there is a processor comprising an AI (artificial intelligence) model, the processor configured to: take, as input, a plurality of sets of distances and angles; and provide, as output, a traffic map; wherein each set of distances and angles is measured by a participating vehicle, of a plurality of participating vehicles in traffic; wherein each distance and angle corresponds to a measured vehicle viewed by one of the participating vehicles; and wherein the traffic map comprises a list of current position coordinates of the measured vehicles in traffic.

This Summary is provided to introduce a selection of concepts in a simplified form. The concepts are further described in the Detailed Description section. Elements or steps other than those described in this Summary are possible, and no element or step is necessarily required. This Summary is not intended to identify key features or essential features of the claimed subject matter, nor is it intended for use as an aid in determining the scope of the claimed subject matter. The claimed subject matter is not limited to implementations that solve any or all disadvantages noted in any part of this disclosure.

These and other embodiments are described in further detail with reference to the figures and accompanying detailed description as provided below.

BRIEF DESCRIPTION OF THE DRAWINGS

FIG. 1 is a sketch showing a vehicle collision, according to prior art.

FIG. 2 is a sketch showing an exemplary embodiment of a procedure for vehicles to avoid a collisions, according to some embodiments.

FIG. 3 is a sketch showing three vehicles colliding, according to prior art.

FIG. 4 is a sketch showing an exemplary embodiment of a procedure for three vehicles to avoid a collision, according to some embodiments.

FIG. 5 is a sketch showing an exemplary embodiment of a procedure for vehicles to identify each vehicle's wireless address, according to some embodiments.

FIG. 6 is a sketch showing an exemplary embodiment of a procedure for vehicles to cooperatively develop a traffic map, according to some embodiments.

FIG. 7A is a schematic showing an exemplary embodiment of a message requesting vehicle locations, according to some embodiments.

FIG. 7B is a schematic showing an exemplary embodiment of a message indicating vehicle locations, according to some embodiments.

FIG. 7C is a schematic showing another exemplary embodiment of a message indicating vehicle locations, according to some embodiments.

FIG. 8 is a flowchart showing an exemplary embodiment of a method for vehicles to determine locations and wireless addresses of other vehicles, according to some embodiments.

FIG. 9A is a schematic showing an exemplary embodiment of an AI structure for correlating input geometrical data and generating a merged map output, according to some embodiments.

FIG. 9B is a flowchart showing an exemplary embodiment of a procedure for producing an AI-based merged map, according to some embodiments.

FIG. 10A is a schematic showing an exemplary embodiment of data for determining a traffic map, according to some embodiments.

FIG. 10B is a flowchart showing an exemplary embodiment of a procedure for using an AI algorithm to determine a traffic map, according to some embodiments.

Like reference numerals refer to like elements throughout.

### DETAILED DESCRIPTION

Disclosed herein are procedures enabling autonomous and semi-autonomous vehicles in traffic to determine the wireless addresses of other proximate vehicles. Systems and methods disclosed herein (the "systems" and "methods", also occasionally termed "embodiments" or "arrangements", generally according to present principles) can provide urgently needed wireless communication protocols to reduce traffic fatalities, facilitate traffic flow, and provide V2V communication options appropriate for 5G and 6G technologies, according to some embodiments.

Autonomous and semi-autonomous vehicles are potentially able to provide greatly increased vehicle safety by communicating with other vehicles to mutually react to an imminent collision and coordinate their actions to avoid the collision. By exchanging messages at electronic speeds, computer-operated vehicles can coordinate their actions, cooperatively adjust their speed and direction, and thereby avoid almost all types of highway accidents, saving countless lives. For such coordination, each vehicle must be able to transmit a message to another specific vehicle, such as the vehicle directly in front, which requires that the transmitting vehicle know the wireless address of the other vehicle. It is generally assumed that GPS or another satellite-based navigation system can provide sufficient localization to identify the vehicles, but this is incorrect. While satellite-based signals can indicate crude positions, they generally cannot provide meter-scale or sub-meter scale resolution required for vehicle selectivity unless multiple signal measurements are acquired and averaged, but averaging is not feasible while the vehicle is in motion at, typically, 30 m/s speeds. Moreover, satellite coverage is spotty in dense urban environments, steep canyons, and many other places where collision avoidance is needed. As an alternative, it may be assumed that 5G and 6G technologies, using high frequencies and directional antennas, can direct transmissions to a specific vehicle, but that is also incorrect unless large phased-array antennas are included in each autonomous vehicle. Moreover, high-frequency beams are notoriously prone to reflections from nearby conducting objects, such as vehicles in dense traffic, further confusing the single-vehicle selectivity. In addition, even if the beam is well-collimated, the wave energy propagates beyond the intended target and can be received by another vehicle in the same direction. Therefore, it remains an open question how vehicles will cooperate to avoid collisions in the future.

The systems and methods disclosed herein include a process termed "map-merging" in which multiple fragmentary "local maps" are combined into a comprehensive "merged map". In addition, the wireless addresses of specific vehicles in a merged map may be included, thereby forming a "traffic map" of the local traffic. Vehicles can determine, from the traffic map, which other vehicles in view are associated with which wireless address, and thereby can communicate with the other vehicles specifically.

For example, a first vehicle can measure the distances and angles toward other vehicles in view, thereby creating a local map of only the vehicles visible to the first vehicle. (As used herein, a second vehicle is "visible" or "in view" to a first vehicle if a sensor on the first vehicle can detect the second vehicle and measure the angle of the second vehicle relative to a coordinate system.) The first vehicle can transmit a "request" message requesting that each receiving vehicle should measure the angles and distances of other vehicles in view, and return the data to the first vehicle. Alternatively, the first vehicle may measure the angles and distances of the other vehicles first, and then include that data in the request message, along with its wireless address. A second vehicle, receiving the request message, can then make another local map from its own point of view, by measuring the angles and distances of vehicles in its view. Usually, the second vehicle's local map may include some of the vehicles in the first vehicle's local map. The second vehicle can then transmit its data back to the first vehicle in a "reply message" which includes the angle-distance data from the second vehicle, as well as the second vehicle's wireless address. The first vehicle or the second vehicle, or another one of the proximate vehicles, can then compare the first and second local maps, adjusting the relative position of the two maps for best fit or correlation of the vehicle locations common to the two local maps. By aligning the local maps according to the commonly-viewed vehicle positions, the maps are thereby merged. The merged map may be termed a "traffic map" since it contains vehicle positions as well as wireless addresses, when known.

Local maps from multiple vehicles may be merged in this way, encompassing more vehicles and, usually, improving the location accuracy. In some cases, it may not be possible to measure one or more of the distances, in which case the angle data may be sufficient to merge the local maps, especially if the same vehicle is viewed by multiple other

5

vehicles from different directions. After calculating the traffic map including the wireless addresses when known, the first vehicle can then distribute the traffic map by broadcasting the vehicle locations relative to a coordinate system, along with each vehicle's wireless address. Each of the vehicles can determine from the traffic map the locations of vehicles in proximity, and also their wireless addresses when known. Hence, each participating vehicle can then cooperate for traffic management, collision avoidance, and other valuable tasks.

The merged traffic map may be in the form of a list of two-dimensional positions of each vehicle in view, or other form of providing the position and address data that a receiving vehicle can interpret to determine where each vehicle is located and what each vehicle's wireless address is. For example, a Cartesian coordinate system may have the X axis parallel to the road and the Y axis perpendicular. The origin of the coordinate system may be at the first vehicle, or centered on the roadway, or at the right shoulder, for example. Importantly, each vehicle may then determine, from the merged traffic map, which of the other vehicles in view is associated with which wireless address, so that the vehicles can then communicate specifically with each other, to avoid hazards and regulate the flow of traffic.

The traffic map may also indicate the positions of non-responsive vehicles, such as human-driven vehicles, and can indicate that they are not accessible wirelessly. Whichever vehicle produces the traffic map can then broadcast the latest traffic map, in which each vehicle position is annotated with the vehicle's wireless address. Thus any vehicle receiving the traffic map, containing relative positions of the first and second vehicles as well as other vehicles in view, can communicate unicast (specifically addressed) messages to each other, and can thereby cooperate in managing safety hazards and traffic flow.

The systems and methods further include providing feature data, besides the distance and angle measurements, about the proximate vehicles. For example, the feature data may include the type of vehicle observed (sedan, delivery van, pickup truck, sports car, motor cycle, semi-trailer, etc.) and/or the color and/or characteristic visible features (convertible with top down, SUV with cargo on roof, car pulling a boat, etc.) along with other vehicle features suitable for identification. Such additional information may facilitate the map merging and vehicle localization steps.

The systems and methods further include a frequency or a band of frequencies allocated for vehicles to exchange messages, such as messages that provide location data and wireless addresses. Such a "localization channel" may be configured according to a wireless technology standard. For example, the localization channel may be a 5G/6G sidelink channel, configured either in "mode-1" (managed by a base station, such as a roadside access point) or "mode-2" (managed by one of the vehicles, without base station involvement). Communications on the localization channel may be at-will and without apparent management, such as Wi-Fi or other short-range communication protocol. Wireless messages on the localization channel may be limited, by convention for example, to no more than a specified transmission power level, which may be sufficient for communicating short distances on a roadway such as a few hundred meters, but not high enough to interfere with more distant users. Wireless messages may employ a specified modulation scheme, such as QPSK (quad phase-shift keying) which includes phase modulation but not amplitude modulation. Avoiding amplitude modulation may provide ease of demodulating messages from moving vehicles in

6

traffic. Alternatively, messages may be modulated in QAM (quadrature amplitude modulation, which includes both amplitude and phase modulation) such as 16QAM (with 16 valid states), 256QAM, etc. A demodulation reference may be included, or provided separately, to assist the receiver in interpreting the message. Messages may be half-duplex (transmit and receive sequentially) and TDD (time-division duplexing) and time-spanning (occupying sequential time elements at a single frequency) for ease of reception. Alternatively they may be full-duplex (transmit and receive on separate frequency bands) and FDD (frequency-division duplexing) and frequency-spanning (occupying multiple frequencies or subcarriers at a single time element).

As used herein, a "map" is a two-dimensional representation of points, each point having a location which may be specified by a distance and an angle, or Cartesian coordinates, or other coordinates, relative to a central point such as a vehicle making the distance and angle measurements. Thus a list or table of coordinate values may be termed a map herein. A vehicle "knows" something if the vehicle includes a processor which has the relevant information. An "autonomous" vehicle is a vehicle operated by a processor, with little or no human control most of the time. A "semi-autonomous" vehicle is a vehicle at least partially operated by a processor, or which can be fully operated by a processor temporarily, such as during emergency intervention. A wireless message is "unicast" if it is addressed specifically to a particular recipient, and "broadcast" if it is transmitted without specifying a recipient. Each modulated resource element of a message is termed a "modulated message resource element", or more simply as a "message element" herein. Further terms will be defined as needed in examples.

Turning now to the figures, FIG. 1 is a sketch showing a vehicle collision, according to prior art. A 4-lane highway **100** is shown at three times **T0**, **T1**, and **T2**, occupied by a first, second, and third vehicle **101-102-103** depicted as cars, and a semi-trailer **104**. All vehicles are traveling to the right, as indicated by arrows. The first vehicle **101** is outlined in bold to indicate that it is the one transmitting. All three cars **101-103** are autonomous vehicles and all are in radio contact with each other on a sidelink or V2V channel.

At **T0**, the first vehicle **101** recognizes that it is traveling too fast and is likely to hit the second vehicle **102**. The first vehicle **101** cannot switch to the left lane because the truck **104** is in the way. It doesn't make sense to shift to the right because then the third vehicle **103** is in the way, and there is no time to reach the rightmost lane. Therefore vehicle **101** transmits an emergency message, intended for the second vehicle **102**, instructing it to immediately and forcefully shift to the left, to avoid a collision. Unfortunately, the first vehicle **101** has incorrectly determined which vehicle is in front, due to the poor spatial resolution of GPS and the poor angular precision of directional beamforming. The wireless address which the first vehicle **101** thinks belongs to the second vehicle **102**, instead belongs to the third vehicle **103**. Therefore, when the first vehicle **101** transmitted the collision-avoidance instruction, the message was actually received by the third vehicle **103** instead of the second vehicle **102**. Consequently, at **T1** the third vehicle **103** immediately performs the instructed left-turn emergency maneuver, and strikes the second vehicle **102**. At **T3**, the first vehicle **101** collides with the second vehicle **102** since the second vehicle **102** is still blocking the way. All three vehicles are badly damaged, as indicated by crunch marks. In fact, they will be lucky to avoid being hit again by the approaching truck **104**. The cause of the collision was the mistaken determination, by the first vehicle **101**, of which

vehicle had which wireless address. The ultimate source of the collision was the insufficient spatial resolution of GPS which cannot reliably discriminate two adjacent vehicles traveling at high speed on a freeway.

FIG. 2 is a sketch showing an exemplary embodiment of a procedure for vehicles to avoid collisions, according to some embodiments. As depicted in this non-limiting example, the freeway **200**, and the first, second, and third vehicles **201-202-203** and the truck **204** are as described with FIG. 1, however this time the first vehicle **201** has determined the correct wireless addresses of the second and third vehicles **202, 203** according to the systems and methods disclosed herein. At **T0**, the first vehicle **201** transmits the emergency collision-avoidance message for an immediate left shift, but this time using the correct wireless address of the second vehicle **202**. Accordingly, at **T1**, the second vehicle **202** dodges left into the leftmost lane. At **T2**, the second vehicle has ocompleted the change, and the first vehicle passes safely through the gap. The third vehicle **203** then sends the first vehicle **201** a message expressing gratitude for using an effective technology to correctly identify and localize each vehicle, instead of relying on an ineffective means for determining which wireless address belongs to which vehicle in view.

FIG. 3 is a sketch showing three vehicles colliding, according to prior art. A highway **300** includes a first, second, and third vehicle **301-302-303** in line. At **T0**, the first vehicle determines that it is traveling faster than the second vehicle **302** and immediately begins to slow down. To avoid being rear-ended by the third vehicle **303**, the first vehicle **301** transmits an emergency message "slow down immediately!" to the wireless address that the first vehicle **301** thinks belongs to the third vehicle **303**, and another emergency message "speed up immediately" to the wireless address that the first vehicle **301** thinks belongs to the second vehicle **302**. Unfortunately, in this case those addresses were misallocated, and they actually belong to the opposite vehicles. The error is due to the poor longitudinal resolution achievable in a moving GPS receiver. Consequently, the third vehicle **303** received an emergency command to speed up and the second vehicle **302** got an emergency command to slow down.

At **T1**, the second vehicle **302** has obligingly slowed down further, as directed by the emergency message, while the third vehicle **303** has accelerated to high speed, as instructed. At **T2**, the first vehicle **301** has smashed into the second vehicle **302** and the third vehicle **303** has smashed into the first vehicle **301**. The cause of this accident was that the first vehicle **301** had misallocated the wireless addresses to the two other vehicles, resulting in sending the emergency messages to the wrong vehicles. The ultimate source was the poor longitudinal resolution of satellite-based locations when moving at high speed.

FIG. 4 is a sketch showing an exemplary embodiment of a procedure for three vehicles to avoid a collision, according to some embodiments. As depicted in this non-limiting example, a first, second, and third vehicle **401-402-403** are in line on a highway **400** when, at **T0**, the first vehicle **401** determines that it is going faster than the second vehicle **402** and begins to slow down. To avoid being rear-ended, the first vehicle **401** sends an emergency message to the third vehicle **403** to slow down, and another emergency message to the second vehicle **402** to speed up. The first vehicle **401** knows the correct wireless address of the second and third vehicles **402-403** because, at an earlier time, all three vehicles exchanged mapping data including distances and angles of each vehicle in view, along with their own wireless address,

and thereby determined which vehicle had which wireless address. Accordingly, the third vehicle **403** receives the emergency message correctly addressed to it and, at **T1**, has begun slowing down as directed. Likewise, the second vehicle **402** has received the acceleration request and has speeded up, giving the others crucial extra seconds to decelerate.

At time **T2**, the first and third vehicles **401-403** have decelerated to match the second vehicle **402**, thereby avoiding colliding. Thus a collision can be avoided (or at least mitigated) in almost every case by cooperative action among the participants, and this depends on each participant knowing which wireless address belongs to which vehicle in view.

FIG. 5 is a sketch showing an exemplary embodiment of a procedure for vehicles to identify other vehicle's wireless address, according to some embodiments. As depicted in this non-limiting example, a method for vehicles to construct their local maps of traffic in view is described, along with a method for the vehicles to then merge their local maps with other maps received from other vehicles, to determine the correct wireless addresses of the various participating vehicles. At time **T0**, a first and second vehicles **501-502** depicted as cars, a third vehicle **503** shown as a pickup truck, and a fourth vehicle **504** shown as a motorcycle, are arrayed in lanes of a freeway **500**. At time **T0**, the first vehicle **501** measures the distance **505** and angle to the second vehicle **502**. In this case, the angle is relative to the direction of travel and is zero since the first and second vehicles **501, 502** are in the same lane. The first vehicle **501** measures the distance to the second vehicle **502** using, for example, radar or lidar, which generally determines a distance from the front of a vehicle to the back of another vehicle. However, the first vehicle **501** has corrected the measurement **505** to equal the distance from the centroid of the the first vehicle **501** to the centroid of the second vehicle **502**, to facilitate map merging later. For example, a processor can add the known additional distance to the center of the first vehicle **501**, plus an estimated distance to the center of the second vehicle **502**, so that the final distance **505** is center-to-center as desired.

The first vehicle **501** also measures the distance **506** and angle **507** of the third vehicle **503**. In this case, the angle is relative to north **508**, which is up in the sketch. The first vehicle may have an electronic compass or other means to determine north.

The first vehicle **501** also measures the distance **509** and angle **510** to the fourth vehicle **504**. In this case, the angle **510** is relative to the orientation (or direction of travel) of the first vehicle.

Thus the figure illustrates three possible ways of reporting an angle measurement. If the road is straight and the vehicles are traveling straight along the road, then the angles can be measured in any of the three ways depicted, or other ways, as long as the vehicles all measure their angles consistently so that their maps can be merged without rotations or other corrections. However, if the road is curved, then the angle measurements will be affected since each vehicle will be pointed in a slightly different direction, and each vehicle's direction will be changing with time. In that case, the map merging may require angular adjustments as well as longitudinal and lateral displacements, adding uncertainty. Preferably, a convention may be established as to the manner of making the angular measurements, such as measuring on a straight section of the road while the measuring vehicle is traveling straight and the target vehicle is not changing lanes. Also the convention may select the measurement basis, such as all angles being relative to the direction of the



road. Such a convention may reduce uncertainties, provide for consistent measurements by various vehicles, and facilitate merging those measurements to determine which vehicle has which wireless address.

At T1, the second vehicle 502 performs its measurements on the vehicles in its view. The second vehicle 502 measures the distance 511 to the first vehicle 501, the distance 513 to the third vehicle 503, and the distance e 514 to the fourth vehicle 504. The second vehicle 502 also measures the angle 521 to the first vehicle 501, the angle 523 to the third vehicle 503, and the angle 524 to the fourth vehicle 504, all relative to the direction of travel 525. Thus the direction of travel 525 is a line or plane passing centrally through the measuring vehicle from back to front, in some embodiments.

At T2, the first and second vehicles 501, 502 exchange messages 531 and 532 specifying their own wireless addresses 533, 534 and the various distances and angles that they have measured. Optionally, they may include in the messages (or separate messages) features of the vehicles in view, such as the second vehicle 502 specifying that the vehicle at angle 521 is a car, the vehicle at angle 523 is a pickup truck, and the vehicle at angle 524 is a motorcycle, thereby assisting the first vehicle 501 in correlating the data in the second vehicle's message 532 with the first vehicle's map. The first and second vehicles 501, 502 then compare their own local maps with the data contained in the messages 532 and 531 which they received, sliding the maps laterally and longitudinally until the locations of the vehicles that they both observe can become aligned. The first and second vehicles 501, 502 then can determine, from the merged map and the stated wireless addresses 533, 534 which vehicle is associated with which wireless address. They can also determine that the third and fourth vehicles 503, 504 are not in wirelessly communication, which could be a valuable bit of knowledge if cooperative action is subsequently needed for collision avoidance. Thus the sketch of T2 represents the merged traffic map obtained by the first and second vehicles 501, 502.

If the third vehicle 503 is at least semi-autonomous and is wirelessly connected, then it too can perform the distance and angle measurements on vehicles in its view, and can receive the broadcast messages 531 and 532 from the other vehicles, and by map-merging can determine the wireless addresses of the first and second vehicles 501, 502. Then, the third vehicle 503 can broadcast its own message containing its wireless address and the list of distances and angles as measured, and thereby enable the first and second vehicles 501, 502 to determine the correct wireless address of the third vehicle 503. In general, the more vehicles contributing to the merged map, the more accurate it becomes, and the more wireless addresses can be correlated with physical vehicles in view. Moreover, when a vehicle is obscured from one vehicle's view but is observed by another vehicle, then the hidden vehicle will appear on the merged map, and the other vehicles can thereby determine its presence even if they cannot see it. Determining where hidden vehicles are present may enable the vehicles to avoid certain accidents.

FIG. 6 is a sketch showing an exemplary embodiment of a procedure for vehicles to cooperatively develop a traffic map, according to some embodiments. As depicted in this non-limiting example, a highway 600 contains five vehicles. A first vehicle 601 measures the distances and angles of all the vehicles in its view, including vehicles 602, 604, and 605. Vehicle 603 is present but is not visible to the first vehicle 601, and hence is shown in dash. After making the measurements, the first vehicle 601 broadcasts a message 612 stating its wireless address and the list of distances and

angles. Alternatively, the first vehicle 601 may prepare a list of coordinates such as Cartesian coordinates of each vehicle in view relative to the first vehicle 601, based on the angles and distances measured. It is immaterial whether the location data is reported in a polar or Cartesian coordinate system, or other coordinate system that the receiving vehicles can interpret.

At T1, a second vehicle 602 receives the first vehicle's message 612, and makes its own distance and angle measurements of the vehicles in view, which include vehicles 601, 603, and 604. The other vehicle 605 is obscured to the second vehicle 602 and thus is shown in dash at T1. The second vehicle 602 broadcasts its message 613 including its wireless address and its own list of distances and angles (or X,Y coordinates of the other vehicles, for example).

The first vehicle or the second vehicle, or both, then prepare a merged map by laterally and longitudinally translating the received local maps until the vehicles that they both observed are matched, within measurement uncertainties, and the associated wireless addresses are added. Their merged traffic map is then shown at time T2, including all the vehicles that were visible to either the first or the second vehicle 601, 602, and including the wireless addresses 633, 634 of the first and second vehicles 601, 602. The first or second vehicle may broadcast the traffic map thus determined, so that the other vehicles can also benefit from the information. For example, vehicle 603 may not be aware of either vehicle 601 or 605 due to the intervening truck 604. All of the visible vehicles are shown on the traffic map at T2, and hence none of them is now shown dashed. The first and second vehicles 601, 602 now know each other's locations and wireless addresses. The other vehicles may also know the locations and wireless addresses of the first and second vehicles 601, 602 by receiving their messages and correlating with their own distance and angle measurements. In addition, the other vehicles may broadcast their corresponding messages to join the communication group, and may thereby participate in future collision avoidance.

In another embodiment, the first or second vehicle 601, 602 may broadcast the traffic map formed by merging the local maps measured by the first and second vehicles. Other vehicles may then obtain the traffic map without having to perform the map merging. As more vehicles contribute their observations, the traffic map may be updated and re-broadcast. As the vehicles move around on the highway, the participating vehicles may again measure their local maps, thereby enabling the traffic map to be updated.

FIG. 7A is a schematic showing an exemplary embodiment of a message requesting vehicle locations, according to some embodiments. As depicted in this non-limiting example, a request message 700, broadcast by a first vehicle, may explicitly or implicitly request geometric traffic data from other vehicles receiving the request message 700. The request message 700 may include the wireless address 701, such as a MAC (media access code) address, of the first vehicle, a code indicating the lane and travel direction 702 of the first vehicle, a number of vehicles 703 in view of the first vehicle, followed by the distances and angles of those vehicles 704-705-706. The sizes of the various fields, in QPSK message elements, is also shown for this example. A MAC address is generally 6 bytes or 48 bits, which can be transmitted in QPSK in 24 message elements, at two bits per modulated message resource element. Thus the length of the message 700 depends on the number of vehicles reported. For three vehicles in view, as shown here, the length of the message is 56 message elements. Other vehicles receiving the request message 700 may thereby determine that a reply

11

message is requested, the reply message including angle and distance measurements by the receiving vehicle. In addition, the request message **700** may include a message-type field indicating that it is a request message and/or that receiving vehicles are requested to transmit a reply message.

FIG. **7B** is a schematic showing another exemplary embodiment of a message indicating vehicle locations, according to some embodiments. As depicted in this non-limiting example, a request message **710** broadcast by a first vehicle may include a short demodulation reference **711** configured to assist a receiver in interpreting the message **710**, the wireless address **712** of the first vehicle, a code **713** indicating which lane the first vehicle is in and which direction it is traveling, a field **714** containing the GPS latitude and longitude of the first vehicle, a code **715** indicating the type, color, and license of the first vehicle, then the number of vehicles being reported **716**, followed by that number of entries, each entry being the distance and angle of a respective vehicle **717**, **719**, along with a code indicating the lane number, type, and color of each vehicle **718**, **720**.

The fields may be encoded for brevity. For example, the demodulation reference **711** may be just two message elements instead of the conventional 5G/6G DMRS (demodulation reference signal). The lane number and direction may be encoded as 3 bits for the lane number (thereby accommodating up to 8 lanes) and the direction in 3 more bits (four directions plus one reserved bit) totaling 3 QPSK message elements. The latitude and longitude field **714** may provide the first vehicle's GPS coordinates with about 1 meter resolution in a range of 1 km, which requires about 10 bits per coordinate. Since the V2V localization is intended to be highly local, ranging just a few hundred meters at most, a location range of 1 km may be sufficient to specify absolute locations in this application. The type of vehicle may be encoded in 8 categories (such as sedan/SUV, 2-seater, pickup truck, delivery van, semi trailer, motorcycle, bus, other), and the color may be selected from a limited palette of 8 basic colors (such as black, gray/silver, white/cream, brown/red, orange/yellow, green, blue, other) totaling 3 QPSK elements. The license plate may take more bits due to the large amount of information in up to seven alphanumeric characters, plus state/province. **21** message elements are allocated. The number of vehicles in view **716** is limited to 16, represented by 2 QPSK elements. Each vehicle in view may be characterized by its distance (1 meter resolution, 512 meters max, 9 bits), and angle (2 degree resolution, 360 degree range, 8 bits), plus its lane number (3 bits), type (3 bits), and color (3 bits), totaling 14 QPSK elements per vehicle including a couple of unused bits available for other features.

The reply messages may be formatted similarly to the request message **700** or **710** and may include the distances, angles, and other data of vehicles in view of the replying vehicles. Alternatively, the request message may be an indication that vehicle measurement data are requested from the receiving vehicle, without listing the measurement data obtained by the first vehicle. In that case, the first vehicle may be responsible for merging the local maps and broadcasting the merged map to the other vehicles.

FIG. **7C** is a schematic showing another exemplary embodiment of a message indicating vehicle locations, according to some embodiments. As depicted in this non-limiting example, a message **730** indicating the distances and angles of other vehicles in view may include several fields, all optional. This message **730** can serve as the initial request message or one of the reply messages. Its shorter

12

format, than that of FIG. **7B**, may make it easier to convey. The fields include an initial short-form demodulation reference **731**, a self-selected identification code **732** as described below, a number of vehicles in view **733**, and the X and Y coordinates **734**, **735**, **736**, **737** of each vehicle relative to the first vehicle, as calculated from the distances and angles to each of those vehicles. The self-selected identification code **732** may be a short random code (8 bits in this case) by which the vehicles can identify themselves and communicate unicast. It is not necessary, in many applications, to know the full MAC address of the vehicles. An 8-bit randomly-selected code may be sufficient to separately identify vehicles in view. In addition, if one of the vehicles notices that another participating vehicle has selected the same code, then one or both of them can select different codes and continue communicating thereafter. A vehicle that changes its code may broadcast a standard message to the others indicating the old and new code values.

The number of vehicles in view **733** is limited to sixteen here, since more values may become unwieldy, and rarely is traffic so dense that more than sixteen vehicles are in view. The distances and angles **734-737** may be encoded as described previously. The number of QPSK message resource elements needed for each field is shown.

As mentioned, the embodiments of FIGS. **7A**, **7B**, and **7C** are non-limiting; artisans may devise message formats with different numbers and sizes of fields and different content from those depicted, without departing from the appended claims.

FIG. **8** is a flowchart showing an exemplary embodiment of a method for vehicles to determine the locations and wireless addresses of other vehicles, according to some embodiments. As depicted in this non-limiting example, two vehicles exchange distance and angle measurements to determine which vehicle in view is associated with which wireless address. At **801**, a first vehicle measures the angles and distances of other vehicles in view, and then at **802** broadcasts the data, along with its wireless address, to other vehicles in range. At **803**, a second vehicle receives the message and records the data, then at **804**, the second vehicle measures the angles and distances of vehicles in its view, thereby preparing a second list of location data. At **805**, the second vehicle compares the first and second lists, optionally as a 2-dimensional map or other calculation tool, and attempts to match vehicle positions in the two maps by translating one of the maps laterally and longitudinally to account for the different viewpoints of the first and second vehicles. If the first and second vehicles both observed the same vehicles in their maps, then a match should be possible. If so, the merged map indicates the various vehicles in view of either the first or second vehicles, and also indicates which of the vehicles in view is the first vehicle, and also provides the first vehicle's wireless address. Therefore, the second vehicle then knows how to contact the first vehicle.

At **806**, the second vehicle broadcasts a second location message including its wireless address and its measurements of the distances and angles of the vehicles in view. At **807**, the first vehicle receives the second location message, records the second vehicle's wireless address and the measurement data, and then at **808** the first vehicle merges the maps by correlating those vehicles that they both observed. At **809**, the first vehicle thereby determines which vehicle is the second vehicle, and also its wireless address. Thereafter **810**, the first or second vehicle may transmit unicast messages directly to each other, for example to cooperate in avoiding an imminent collision.

Map merging, based on fragmentary data from multiple viewpoints, is a complex problem. First of all, the relative positions of the various viewpoints are initially unknown, so each local map must be translated longitudinally and laterally to match with the other local maps. Secondly, each local map includes a different subset of vehicles in the region. Thirdly, there may be other fragmentary data available, such as the vehicle types and colors, which lane of a multilane highway, and special features. In addition, some of the vehicles may have GPS data available, which may be useful despite its limitations. For problems of this complexity, artificial intelligence (AI) may be well-suited. The following examples disclose systems and methods for using AI to determine the traffic map.

FIG. 9A is a schematic showing an exemplary embodiment of an AI structure for correlating input geometrical data and generating a merged map output, according to some embodiments. As depicted in this non-limiting example, an AI structure 900, such as a neural net, may be programmed in a computer. The AI structure 900 generally includes a plurality of inputs depicted as squares 901, internal functions depicted as circles 903 and 905, and one or more outputs depicted as a triangle 907. Directional links 902 convey inputs 901 to the internal functions 903, and further links 904 convey processed data between layers of internal functions 905, and further links 906 convey processed data to the output 907. Each internal function 903, 905 may include mathematical and/or logical operations on the data provided to it, and may then provide processed data to the next layer or the output. The output 907 may include a merged map indicating the calculated two-dimensional positions of the various vehicles whose distances and angles were provided as input to the structure, and may include, associated with some of the vehicle positions, a wireless address of the corresponding vehicle. The output 907 may be in the form of a list or table that shows the position of each vehicle represented in the inputs 901 and its wireless address if known. The position may be listed as the latitude and longitude of each vehicle, or as distances parallel and perpendicular to the road direction relative to one of the vehicles, or other suitable tabulation of the positions and wireless addresses of the vehicles in view.

Although the figure shows links connecting only a few of the internal functions in each layer, in an actual AI structure the inputs and internal functions may be linked to all of the internal functions in the next layer. In addition, in some embodiments, a feedback link (not shown) carrying processed data back to a previous layer, may be included. The AI structure 900 may have many more layers than shown. Each internal function 903, 905 may include one or more adjustable variables that can be adjusted to optimize the output 907 according to the application. Links may also have weighting or other functionality, which also may be varied, in some embodiments.

The inputs 901 may include a variety of data types. For the geometrical map merging application, the inputs 901 may include the angles and distances of the various vehicles in view, as measured by each participating vehicle, collectively labeled as 908. The inputs 901 may include GPS data acquired by each of the vehicles, including resolution (if known), and optionally corrected for the vehicle's motion since the acquisition time (if known), collectively labeled as 909. The inputs 901 may include encoded descriptions of the vehicles such as vehicle type and color, lane position, and any special features that may enhance recognition by the other vehicles, labeled as 910.

In addition, a special input 911 is the actual distribution of vehicles, determined independently of the angle-distance measurements, such as by an overhead camera. The special input 911 is not provided to the AI structure 900, but instead is used as the "ground truth" 912 for comparison 913 with the predicted output map 907. The accuracy of the prediction 907 may then be evaluated according to the number of correct vehicle positions in the predicted output 907. The adjustable variables in the internal functions 903, 905 may be adjusted to improve the accuracy of the predictions, and thereby convert the AI structure into an AI "model" simulating or predicting the vehicle positions in traffic. After analyzing a large number of cases and adjusting or "tuning" the variables to incrementally improve the predictions, the output 907 may provide a traffic map with acceptable accuracy.

An algorithm may be developed from the AI model, for field use by vehicles in traffic. Since vehicles generally lack supercomputers, the algorithm may be a smaller and simpler version of the AI structure (with unnecessary links and functions discarded, for example). Alternatively, the algorithm may be a different type of analysis device, such as a computer subroutine, an interpolatable tabulation of values, or other calculation means for merging fragmentary local maps and subsidiary information into a comprehensive map of traffic in a region, according to some embodiments.

Optionally, the vehicles may record the input data and the predicted traffic map in, for example, a memory, and may then test the map by observing the vehicles as they subsequently move around, and may thereby verify the predicted map, or may uncover errors in the predicted map. The vehicles may then transfer the recorded data and predictions to the AI model for further refinement. If an improved version of the algorithm becomes available, it may be downloaded to the vehicles for subsequent use, according to some embodiments.

Due to the potentially large number of inputs and adjustable variables in the model, and the very large amount of training data likely needed for convergence of the model, the AI structure is preferably prepared in a supercomputer. The supercomputer may be a classical semiconductor-based computer, with sufficient speed and thread count and processor count to perform the model training in a feasible amount of time. Alternatively, the supercomputer may be a quantum computer having "qubits" or quantum bits as its working elements. Quantum computers may provide special advantages to solving AI models because they can very rapidly explore a complex terrain of values, such as the highly interrelated effects of the various inputs on the output results. Therefore, the systems and methods include a quantum computer programmed to include an AI structure and trained on wireless message data to merge map fragments acquired or measured by each of several vehicles in traffic, and to prepare a comprehensive map of the vehicles, and optionally fixed items, detected by the vehicles.

FIG. 9B is a flowchart showing an exemplary embodiment of a procedure for producing an AI-based merged map, according to some embodiments. As depicted in this non-limiting example, at 951 an AI structure, such as a neural net or other suitable AI structure, is provided in a computer such as a supercomputer. The AI structure is suitable for correlating geometrical data, in this case two-dimensional map fragments, and generating a merged map, which generally includes all of the vehicles listed in the fragmentary maps. At 952, an AI model is developed by training the adjustable variables in the AI structure according to traffic events, preferably a large number of traffic events spanning a wide

range of situations. Each traffic event, in this case, may include the angles and distances of each proximate vehicle as viewed from each other vehicle. Each participating vehicle thereby acquires the geometrical data using sensors on each of the participating vehicles. The data may also include codes indicating the type of vehicle, the color, special features of each vehicle if known, each vehicle's own GPS data if known, its lane position, and other data as may be acquired. At **953**, the adjustable variables in the AI structure are varied incrementally, and the predicted map output is compared to the actual traffic distribution. The adjustable variables may then be varied further, or varied differently, or otherwise adjusted to improve the predictive accuracy of the model. At **954**, after satisfactory accuracy has been achieved under a sufficient range of traffic situations, an algorithm may be derived from the AI model for use by the vehicles in determining the traffic distribution from the fragmentary local maps and other data as available. As mentioned, the vehicles may continue to record traffic data for further refinement of the model.

FIG. 10A is a schematic showing an exemplary embodiment of input data for determining a traffic map, according to some embodiments. As depicted in this non-limiting example, input data **1000** for an AI model may include local maps **1001** acquired by each vehicle, consisting of the measured angles of the other vehicles in view, relative to a particular direction such as the roadway direction. The local maps **1001** may also include distances measured between the vehicles if available. Each local map **1001** may include an identification code, such as a wireless address, of the vehicle making the measurements, so that the output merged map can indicate the wireless address of each vehicle in traffic.

The input data **1000** may also include GPS data **1002**, or location data from another satellite-based navigation system, or a land-based navigation system configured to provide the position (such as latitude and longitude) of each vehicle. If available, the GPS data **1002** may include the resolution claimed for the position data. Since the vehicles are generally moving, the position data may be corrected for the distance covered by the vehicle during time elapsed after the GPS data was acquired, based on the vehicle's speedometer and a compass, for example.

The input data **1000** may also include descriptive types of data **1003**, such as the types of vehicles (both the subject vehicle and each observed vehicle), their colors, which lane each vehicle is in, and any special visible features such as "loaded roof-rack" or "smoky exhaust" which may help other vehicles to recognize them.

The input data **1000** may be processed in the AI model, or an algorithm derived therefrom, to produce as output a "best" merged traffic map **1004**, wherein best means the most accurate prediction of the traffic so far achievable based on the adjustment of variables in the model.

FIG. 10B is a flowchart showing an exemplary embodiment of a procedure for using an AI algorithm to determine a traffic map, according to some embodiments. As depicted in this non-limiting example, at **1051** a first vehicle measures the angles and, optionally, the distances to other vehicles in view, and optionally other information such as vehicle type and color, which lane, and the like. The first vehicle transmits this information, along with its own address code, to other vehicles in proximity. At **1052**, the other vehicles make similar measurements from their viewpoint and transmit their data to the first vehicle and the other vehicles in range. At **1053**, the first vehicle, and optionally the other vehicles as well, produces a merged traffic map by combining the

data from other vehicles with its own measurements. The first vehicle may use an AI-derived algorithm to convert the fragmentary mapping and descriptive data items into an integrated two-dimensional merged traffic map of the vehicle positions in the region. In addition, the first vehicle, or the algorithm implemented by the first vehicle, may include the wireless addresses of the various vehicles in the merged traffic map so that the various vehicles can then communicate specifically with each other. In addition, the merged traffic map may include the positions of non-participating vehicles that have not provided wireless addresses or position data, based on the observations of the other vehicles from multiple viewpoints. The first vehicle may transmit the map, in a suitable format, to the other vehicles, including the wireless address of each vehicle if known. Then at **1054**, each of the participating vehicles can communicate unicast with each other. Importantly, each vehicle can identify which of the vehicles in view has which wireless address, according to the map, and therefore can collaborate in avoiding traffic hazards and promoting the smooth flow of traffic.

The systems and methods disclosed herein may enable autonomous and semi-autonomous vehicles in traffic to specifically identify other vehicles, that is, to determine which wireless address corresponds to which visible vehicle in proximity. The vehicles may thereby cooperate to manage the flow of traffic, avoid hazards, minimize energy consumption, and many other advantages, according to some embodiments. In addition, the merged traffic map may enable better driving options than the single-viewpoint local map visible to each vehicle individually, for example by revealing vehicles that may be obscured from one vehicle's viewpoint. The apparatus needed to implement these systems and methods may already be present on autonomous and semi-autonomous vehicles, in the form of cameras, radar and lidar systems, and other sensors that acquire the data needed to drive the vehicle, as well as wireless transmitters and receivers. By addition of the software needed to merge the local maps, using the algorithm for example, each vehicle can obtain the full traffic map, without adding or modifying equipment on the vehicle, and at minimal cost associated with the software download, according to some embodiments.

The wireless embodiments of this disclosure may be aptly suited for cloud backup protection, according to some embodiments. Furthermore, the cloud backup can be provided cyber-security, such as blockchain, to lock or protect data, thereby preventing malevolent actors from making changes. The cyber-security may thereby avoid changes that, in some applications, could result in hazards including lethal hazards, such as in applications related to traffic safety, electric grid management, law enforcement, or national security.

In some embodiments, non-transitory computer-readable media may include instructions that, when executed by a computing environment, cause a method to be performed, the method according to the principles disclosed herein. In some embodiments, the instructions (such as software or firmware) may be upgradable or updatable, to provide additional capabilities and/or to fix errors and/or to remove security vulnerabilities, among many other reasons for updating software. In some embodiments, the updates may be provided monthly, quarterly, annually, every 2 or 3 or 4 years, or upon other interval, or at the convenience of the owner, for example. In some embodiments, the updates (especially updates providing added capabilities) may be provided on a fee basis. The intent of the updates may be to

cause the updated software to perform better than previously, and to thereby provide additional user satisfaction.

The system and method may be fully implemented in any number of computing devices. Typically, instructions are laid out on computer readable media, generally non-transitory, and these instructions are sufficient to allow a processor in the computing device to implement the method of the invention. The computer readable medium may be a hard drive or solid state storage having instructions that, when run, or sooner, are loaded into random access memory. Inputs to the application, e.g., from the plurality of users or from any one user, may be by any number of appropriate computer input devices. For example, users may employ vehicular controls, as well as a keyboard, mouse, touch-screen, joystick, trackpad, other pointing device, or any other such computer input device to input data relevant to the calculations. Data may also be input by way of one or more sensors on the vehicle, an inserted memory chip, hard drive, flash drives, flash memory, optical media, magnetic media, or any other type of file—storing medium. The outputs may be delivered to a user by way of signals transmitted to vehicle steering and throttle controls, a video graphics card or integrated graphics chipset coupled to a display that may be seen by a user. Given this teaching, any number of other tangible outputs will also be understood to be contemplated by the invention. For example, outputs may be stored on a memory chip, hard drive, flash drives, flash memory, optical media, magnetic media, or any other type of output. It should also be noted that the invention may be implemented on any number of different types of computing devices, e.g., embedded systems and processors, personal computers, laptop computers, notebook computers, net book computers, handheld computers, personal digital assistants, mobile phones, smart phones, tablet computers, and also on devices specifically designed for these purpose. In one implementation, a user of a smart phone or WiFi-connected device downloads a copy of the application to their device from a server using a wireless Internet connection. An appropriate authentication procedure and secure transaction process may provide for payment to be made to the seller. The application may download over the mobile connection, or over the WiFi or other wireless network connection. The application may then be run by the user. Such a networked system may provide a suitable computing environment for an implementation in which a plurality of users provide separate inputs to the system and method. In the below system where vehicle controls are contemplated, the plural inputs may allow plural users to input relevant data at the same time.

It is to be understood that the foregoing description is not a definition of the invention but is a description of one or more preferred exemplary embodiments of the invention. The invention is not limited to the particular embodiment(s) disclosed herein, but rather is defined solely by the claims below. Furthermore, the statements contained in the foregoing description relate to particular embodiments and are not to be construed as limitations on the scope of the invention or on the definition of terms used in the claims, except where a term or phrase is expressly defined above. Various other embodiments and various changes and modifications to the disclosed embodiment(s) will become apparent to those skilled in the art. For example, the specific combination and order of steps is just one possibility, as the present method may include a combination of steps that has fewer, greater, or different steps than that shown here. All such other embodiments, changes, and modifications are intended to come within the scope of the appended claims.

As used in this specification and claims, the terms “for example”, “e.g.”, “for instance”, “such as”, and “like” and the terms “comprising”, “having”, “including”, and their other verb forms, when used in conjunction with a listing of one or more components or other items, are each to be construed as open-ended, meaning that the listing is not to be considered as excluding other additional components or items. Other terms are to be construed using their broadest reasonable meaning unless they are used in a context that requires a different interpretation.

The invention claimed is:

1. A method for a first wireless device to determine locations of vehicles in traffic, the method comprising:
  - a) attempting and failing to determine a location of the first wireless device using a global navigation satellite system (GNSS);
  - b) then broadcasting a request message comprising a wireless address of the first wireless device, a time delay, and a request for each wireless entity within radio range to:
    - i) wait the time delay;
    - ii) then measure an angle and a distance of each vehicle in view of the wireless entity; and then
    - iii) transmit a reply message to the first wireless device, the reply message listing the angles and the distances, and further including a wireless address of the wireless entity; and
  - c) determining, according to the angles and distances, a location of at least one vehicle relative to the first wireless device.
2. The method of claim 1, wherein each request message is configured according to 5G or 6G technology.
3. The method of claim 1, wherein:
  - a) the first wireless entity is a vehicle or a roadside access point; and
  - b) each wireless entity is a vehicle or a wireless camera or a roadside access point.
4. The method of claim 1, further comprising:
  - a) after transmitting the request message, waiting the time delay; and
  - b) then measuring an angle and a distance of each vehicle in view of the first wireless device.
5. The method of claim 4, further comprising:
  - a) receiving, from one or more of the wireless entities, one or more reply messages, wherein each reply message indicates:
    - i) one or more angles and one or more distances of one or more vehicles in view of the wireless entity; and
    - ii) a wireless address of the wireless entity.
6. The method of claim 5, further comprising:
  - a) combining the angles and distances from the reply messages, with the angles and distances measured by the first wireless device; and
  - b) determining, according to the combining, a two-dimensional position of each vehicle that is viewed by at least one of the wireless entities or by the first wireless device.
7. The method of claim 5, further comprising:
  - a) determining, according to the angle and distance measurements, a two-dimensional position of each vehicle in traffic.
8. The method of claim 5, further comprising determining:
  - a) which angle and distance measurements correspond to a vehicle that is viewed by exactly one viewer; and
  - b) which angle and distance measurements correspond to a vehicle that is viewed by more than one viewer;

19

- c) wherein a viewer comprises the first wireless device or one of the wireless entities.
- 9. The method of claim 8, further comprising:
  - a) performing a fitting analysis according to the angle and distance measurements, wherein the fitting analysis comprises determining a calculated position of each vehicle that is viewed by more than one viewer.
- 10. The method of claim 5, further comprising:
  - a) broadcasting a mapping message indicating two-dimensional position coordinates of each vehicle in traffic relative to the first wireless device; and
  - b) wherein the mapping message further indicates, for each wireless entity, which coordinates are associated with the wireless entity, and which wireless address is associated with the wireless entity.
- 11. Non-transitory computer-readable media in a wireless entity, the media containing instructions that when implemented in a computing environment cause a method to be performed, the method comprising:
  - a) receiving a request message from a first vehicle, the request message requesting the wireless entity to:
    - i) determine, at a particular time, an angle measurement and a distance measurement of each vehicle in view of the wireless entity; and
    - ii) transmit, to a particular wireless address of the first vehicle, a reply message comprising the angle and distance measurements;
  - b) at the particular time, measuring an angle and a distance of each vehicle in view of the wireless entity;
  - c) transmitting a reply message to the first vehicle, the reply message comprising the angles and distances measured by the wireless entity; and
  - d) receiving, from the first vehicle, a traffic map message comprising two-dimensional coordinates of vehicles in traffic.
- 12. The non-transitory computer-readable media of claim 11, wherein the traffic map message further comprises a wireless address of each vehicle that transmitted a reply message.
- 13. The non-transitory computer-readable media of claim 11, wherein the traffic map message further comprises one or more visible characteristics of each vehicle in traffic.
- 14. The non-transitory computer-readable media of claim 13, wherein the visible characteristics comprises a vehicle type encoded in a predetermined code comprising at most six bits.
- 15. The non-transitory computer-readable media of claim 11, wherein the request message, the reply messages, and the traffic map message are transmitted on a sidelink channel allocated for vehicle-to-vehicle or vehicle-to-anything communications.
- 16. The non-transitory computer-readable media of claim 11, the method further comprising:

20

- a) determining, according to an electronic compass, a direction of geographical north; and
- b) for each vehicle in view of the wireless entity, measuring an angle of a centroid of the vehicle in view, relative to geographical north.
- 17. The non-transitory computer-readable media of claim 11, the method further comprising:
  - a) using a radar or lidar or sonar distance-measuring sensor, measuring a distance between the wireless entity and a closest part of each vehicle in view of the wireless entity;
  - b) for each vehicle in view, calculating a centroid correction distance comprising, wherein the centroid correction distance comprises an angle subtended by the vehicle in view times the distance to the closest part of the vehicle in view; and
  - c) adding the centroid correction distance to the measured distance between the first vehicle and the closest part of the particular vehicle.
- 18. A processor comprising an AI (artificial intelligence) model, the processor configured to:
  - a) take, as input, a plurality of sets of distances and angles; and
  - b) provide, as output, a traffic map;
  - c) wherein each set of distances and angles is measured by a participating vehicle, of a plurality of participating vehicles in traffic;
  - d) wherein each distance and angle corresponds to a measured vehicle viewed by one of the participating vehicles; and
  - e) wherein the traffic map comprises a list of current position coordinates of the measured vehicles in traffic.
- 19. The processor of claim 18, wherein the AI model is further configured to be implemented in a processor of one of the participating vehicles.
- 20. The processor of claim 18, wherein the AI model is further configured to:
  - a) for each measured vehicle, determine a difference between the current position coordinates and previously determined position coordinates;
  - b) for each measured vehicle, calculate a velocity according to the difference and a time difference between the current position coordinates and the previously determined position coordinates;
  - c) for each pair of measured vehicles, calculate a distance between the measured vehicles of the pair and a relative velocity between the measured vehicles of the pair; and
  - d) predict, according to the distance and the relative velocity, when an imminent collision is expected to occur.

\* \* \* \* \*